



LIGHT MOVER

Part # 980120 / 980240 / 980277

PATENT PENDING

WARNINGS **READ BEFORE USING**

WARNING

This product can expose you to chemicals, including lead, which is known to the State of California to cause cancer or birth defects or other reproductive harm. For more information, go to www.p65Warnings.ca.gov

READ ALL instructions and warnings carefully before installing and operating your Horizon Lift. Failure to do so could result in personal injury or product damage. This equipment should not be installed, operated or maintained by any person who has not read and understood all the contents of this manual.

USE GOOD JUDGEMENT in choosing the appropriate hardware to install any strut bar to your overhead support and in choosing the appropriate attachment points for light bar. If you have any doubt whether your hardware is within capacity to support your Horizon Lift, strut bar, and lights, **DO NOT USE IT!**

This manual provides important information for personnel involved with the installation, operation and maintenance of this product. Although you may be familiar with this or similar equipment, it is strongly recommended that you read this manual before installing, operating or maintaining the product.

The lift device is not designed for and **MUST NOT** be used for lifting, supporting, or transporting people, or for lifting or supporting loads over people.

PRIOR TO MOUNTING the lift device, ensure that the overhead structure support or strut is adequate to support the lift and its load. If necessary consult a professional that is qualified to evaluate the adequacy of the suspension location and its supporting structure.

DO NOT operate a lift unless it has been securely attached to a suitable support.

INSPECT the Horizon Lift, Guide Pulley, Hardware, Webbing and Hooks regularly for signs of wear. Replace if webbing is cut, worn or frayed or if hooks, plastic parts and metal parts show any signs of being bent, deformed or damaged.

DO NOT stand under light while operating.

DO NOT exceed the total weight of 150 lbs. for all components combined (light bar and lights).

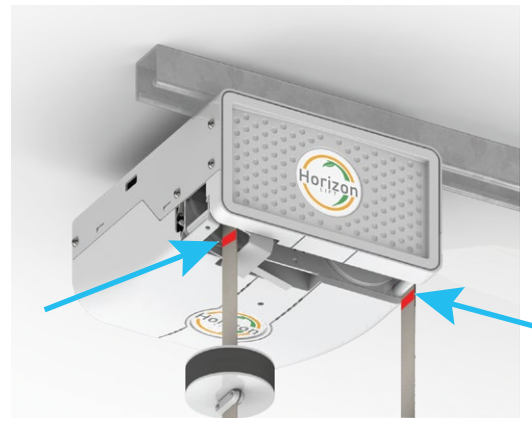
CHECK to make sure that all nuts, bolts and or any other hardware attachments are sufficiently fastened.

DO NOT attempt to lengthen the load webbing or repair damaged load webbing.

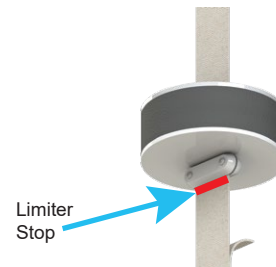
CHECK to make sure the light bar and webbing straps are free to move, will clear all obstructions, and are not twisted

BEFORE OPERATING your lift, make sure the webbing straps are not twisted, kinked, damaged or worn.

DO NOT unwind the webbing from the lift beyond the red lines marked on each webbing strap.



DO NOT remove or adjust the limiter stop located under the safety stop disk. This is a factory set position. This should never be removed or adjusted. Doing so may create a problem for the length of the strap being spooled or unspooled along with the operation of the safety stop switch.



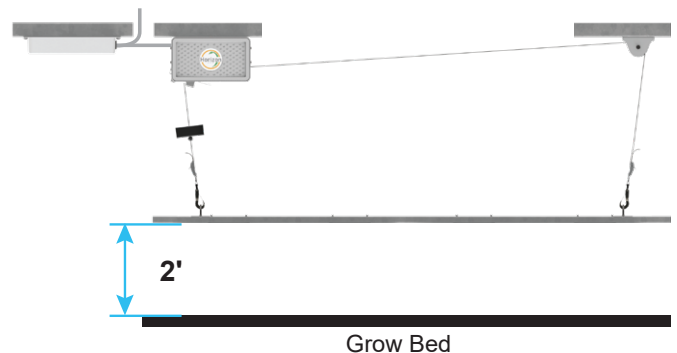
DO NOT use limit switches as routine operating stops. They are emergency devices only.

CHECK that the Horizon Lift power supply is correctly set and compatible with your outlet power. If you are in doubt as to whether your power cord and power supply are compatible - please consult your local electrician before using.

DO NOT OPERATE if the green light on the Horizon Lift unit you are trying to control is not illuminated and blinking. If the light on the Horizon Lift unit is **NOT** illuminated and blinking but the "IN USE" indicator next to the selected station in the Horizon Lift app is green, **DO NOT OPERATE** as you may be connected to a different lift.

To verify you are connected to the correct lift, both the "IN USE" indicator next to the selected station in the Horizon Lift app, and the light on the Horizon Lift unit must be illuminated green.

BEFORE OPERATING make sure the lowest set point of the light bar is set to 2ft above the grow bed.



AFTER INSTALLATION of the Horizon Lift unit, user must monitor light levels and leaf temperature to prevent crop damage.

MODIFICATIONS to upgrade, rerate, or otherwise alter this equipment shall be authorized only by the original equipment manufacturer.